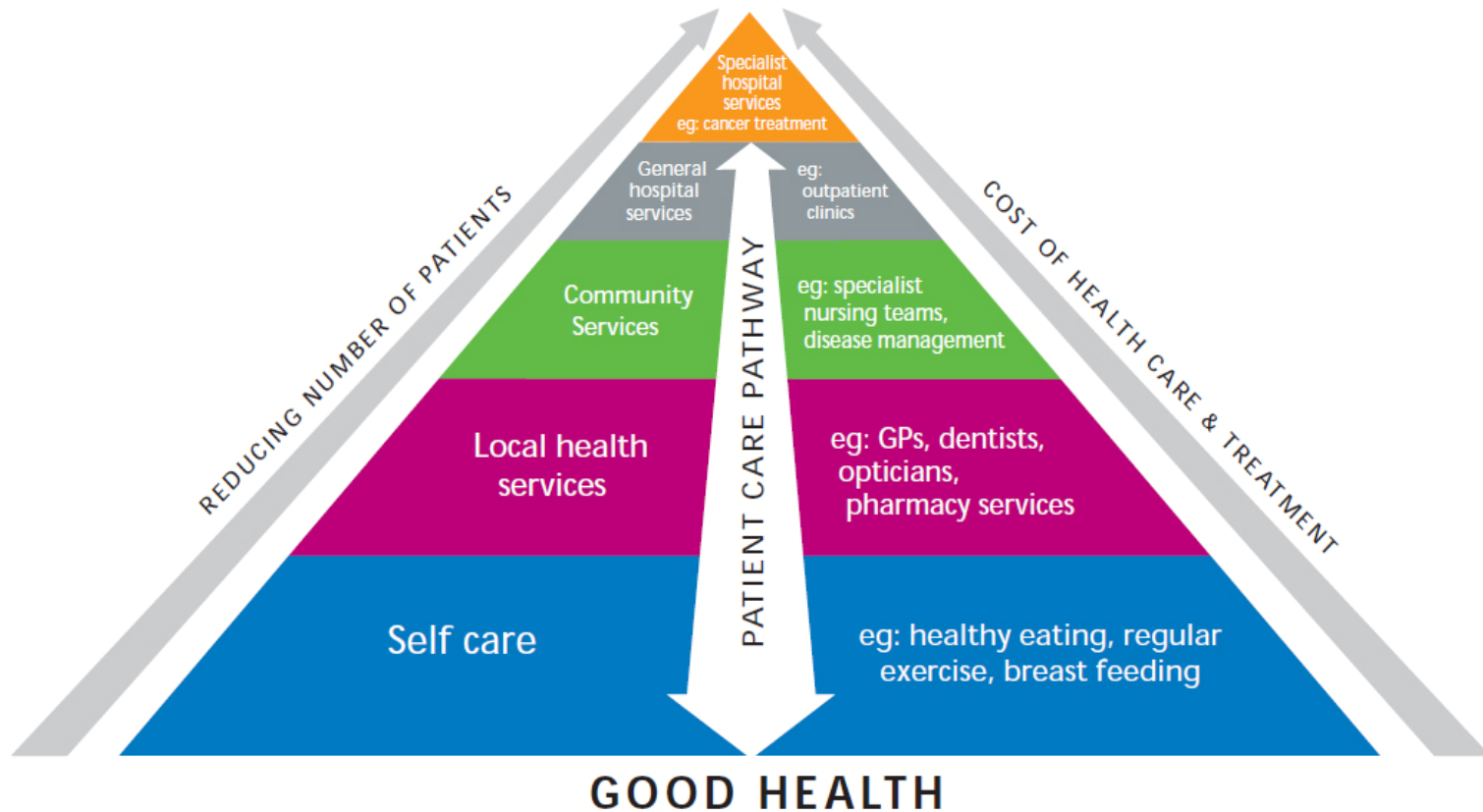


Berkshire West 5 Year Strategy

- Improve patient outcomes and experience
- Close the £44m QIPP gap

“Keeping people well and out of hospital,
in partnership”

The triangle of care



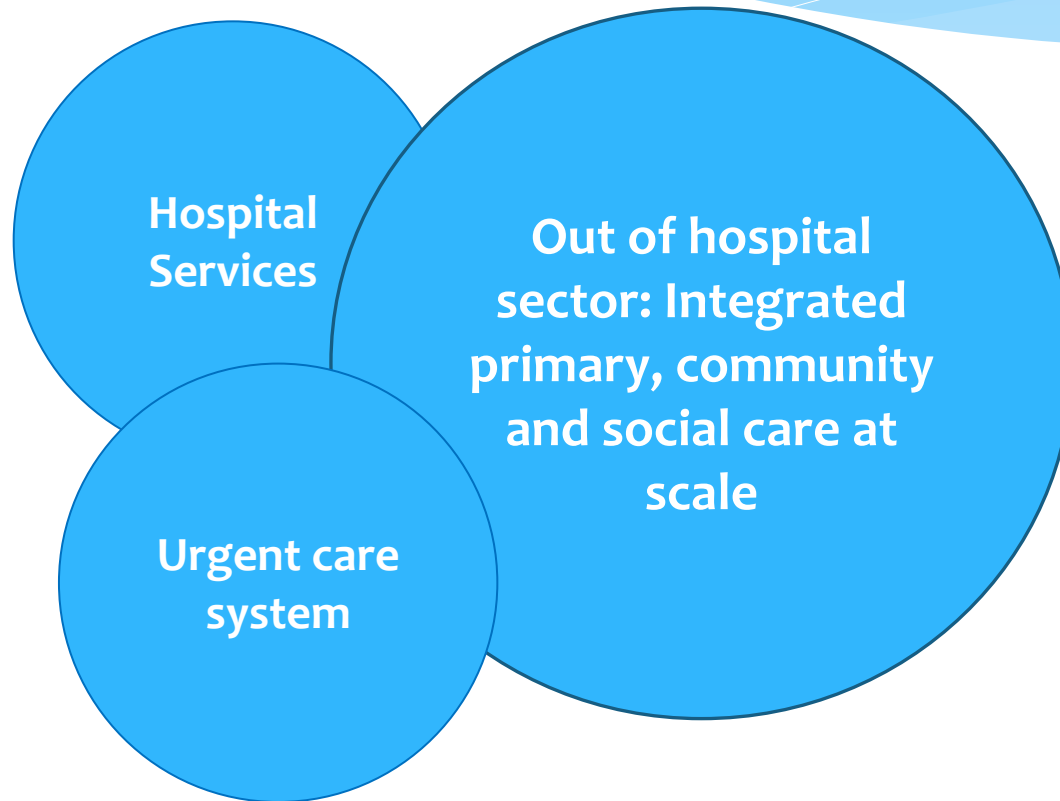
6 characteristics of high quality sustainable systems

- * Citizen Participation and Empowerment
- * Wider Primary Care provided at Scale
- * Integrated Care
- * Access to high quality Urgent and Emergency Care
- * A step change in the productivity of elective care
- * Specialised Services concentrated in centres of excellence

The change required

- * Capability of primary, community and social care is increased to provide “wrap around” co-ordinated care
- * Hospitals deliver more of their services directly in the community – physicians working beyond the hospital walls with primary and social care e.g. diabetes
- * Providers work together to deliver a continuum of care to patients who are also supported to manage their own conditions
- * Better focus on the health and well being of people, rather than simply dealing with sick patients arriving at hospital

The whole System



Urgent

- Accessible and Responsive Service for people with Urgent Care Needs
- Services that support people with non life threatening conditions to remain at home
- Operating as part of the wide care systems

Out of hospital sector

Primary, Community Social and Voluntary Care

- *New models of working*
- *New workforce*
- *Well integrated*
- *Better Care Fund*

Planned

- Supporting the population to keep healthy
- Pro active identification of people at risk and prompt intervention
- Supporting patients to manage their own condition
- Robust and systematic management of LTC and Frail Elderly

Urgent Care

Vision:

- *People with urgent but non life threatening needs must get a highly responsive, effective and personalised service **outside of hospital**
- *People with serious or life threatening emergencies should be treated in centres with the best expertise and facilities to maximise the chances of survival and a good recovery

New models of hospital care

- * Patients only admitted to hospital if their clinical needs require it – more services out of hospital e.g. HAH
- * Patients empowered through effective communication, shared decision making and self management
- * Specialist medical care is not confined to the hospital walls e.g. diabetes
- * Focus should be on recovery and enabling patients to leave hospital as soon as possible – 7 day discharges
- * 7 day care – including diagnostics, support services and Consultant presence on wards over 7 days
- * Specialities wrap around the patient e.g. geriatricians work with surgeons and palliative care consultants work with oncologists